

## Business Enabled Acquisition and Technology



# Leading Edge Technology Services (LETS)

## Moving at the Speed of Technology

In a world where technology moves at the speed of sound, we at BEAT, navigate what is innovative and what is obsolete to bring your business into the 21st century and beyond. Below is a list of the latest technologies that we are bringing to the forefront of the modern world. LETS get started!

### Artificial Intelligence and Big Data

AI (pronounced AYE-EYE) or artificial intelligence is the simulation of intelligence processes by machines, especially computer systems. Big data is a term that describes any voluminous amount of structured, semi-structured, unstructured data that users potentially mine for information. Although big data is a very specific quantity, the BEAT uses the term when speaking about exabytes of data.



### Enterprise Architecture

An enterprise architecture (EA) is a conceptual blueprint that defines the structure and operation of an organization. An enterprise architecture intends to decide how an organization can most effectively achieve its current and future objectives.

### Health Info Technology

Health IT (information technology) is the area of IT involving the design, development, creation, use, and maintenance of information systems for the healthcare industry. Expectations of using automated and interoperable healthcare information systems include lowering costs, improving efficiency and reducing error, as well as providing better consumer care and service.



### Internet of Things

The Internet of Things (IoT) includes a scenario in which unique identifiers describe objects, animals, or people and provides the ability to transfer data over a network without requiring human-to-human or human-to-computer interaction. IoT has evolved from the convergence of wireless technologies, micro-electromechanical systems (MEMS), and the internet.



### Mobile Application Management

Mobile application management is the delivery and administration of enterprise software to end users' corporate and personal smartphones and tablets. Unlike mobile device management software, which applies to device activation, enrollment, and provisioning, MAM software supports software delivery, software licensing, configuration, application life cycle management (ALM) and usage tracking. Many mobile application managers can also compare mobile device type and ownership to IT-defined policies and limit how corporate data can share among mobile apps.



## Inside this issue

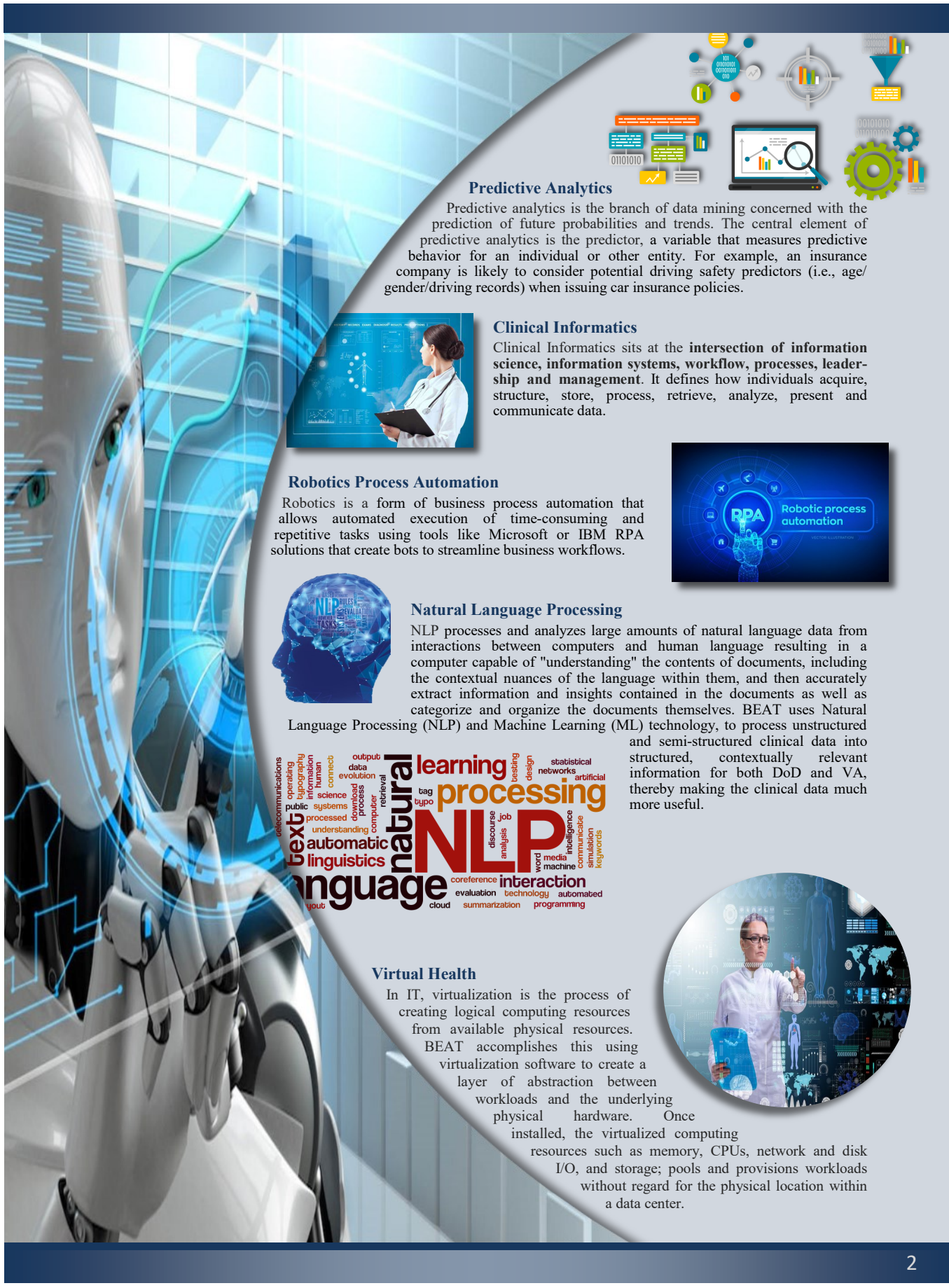
Artificial Intelligence and Big Data .....	1
Enterprise Architecture .....	1
Health Info Technology .....	1
Internet of Things.....	1
Mobile Application Mgmt .....	1
Predictive Analytics .....	2
Clinical Informatics.....	2
Robotic Process Automation .....	2
Natural Language Processing .....	2
Virtual Health .....	2

**Matthew Williams**  
Chief Growth Officer  
**704-962-4298**  
[matthew.williams@beatllc.com](mailto:matthew.williams@beatllc.com)

BEAT  
802 E. Quincy Street  
San Antonio, TX 78215

UEI: U3QJUBM7ZFA6  
CAGE: 5KW79





### Predictive Analytics

Predictive analytics is the branch of data mining concerned with the prediction of future probabilities and trends. The central element of predictive analytics is the predictor, a variable that measures predictive behavior for an individual or other entity. For example, an insurance company is likely to consider potential driving safety predictors (i.e., age/gender/driving records) when issuing car insurance policies.



### Clinical Informatics

Clinical Informatics sits at the **intersection of information science, information systems, workflow, processes, leadership and management.** It defines how individuals acquire, structure, store, process, retrieve, analyze, present and communicate data.

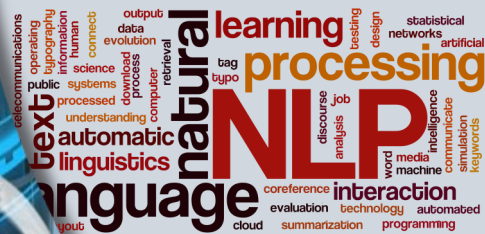
### Robotics Process Automation

Robotics is a form of business process automation that allows automated execution of time-consuming and repetitive tasks using tools like Microsoft or IBM RPA solutions that create bots to streamline business workflows.



### Natural Language Processing

NLP processes and analyzes large amounts of natural language data from interactions between computers and human language resulting in a computer capable of "understanding" the contents of documents, including the contextual nuances of the language within them, and then accurately extract information and insights contained in the documents as well as categorize and organize the documents themselves. BEAT uses Natural Language Processing (NLP) and Machine Learning (ML) technology, to process unstructured and semi-structured clinical data into structured, contextually relevant information for both DoD and VA, thereby making the clinical data much more useful.



### Virtual Health

In IT, virtualization is the process of creating logical computing resources from available physical resources. BEAT accomplishes this using virtualization software to create a layer of abstraction between workloads and the underlying physical hardware. Once installed, the virtualized computing resources such as memory, CPUs, network and disk I/O, and storage; pools and provisions workloads without regard for the physical location within a data center.

